

State Aid Public Consultation (2) – Closure Note

1. Outcome of the Public Consultation

Hampshire County Council has issued a Public Consultation document to summarise the planned approach to extending coverage of superfast broadband to more premises in Hampshire, which includes details of funding allocations and the proposed procurement process.

DCMS has set an additional target to extend coverage from 90% to at least 95% and Hampshire has been awarded £9.2m of grant funding by BDUK to reach this goal. Hampshire County Council has agreed to match this funding with up to £9.2m.

This Public Consultation process closed on the 10th July 2014.

During the Consultation period the Hampshire Superfast Broadband Programme received an update of future planned deployments from the following suppliers: BT Openreach, Virgin Media, HiWifi, CTIL, VTesse, Vodafone and Level 3 Communications. Only BT Openreach provided a new dataset, which later resulted in minor changes to the final area considered for the later extension of the project.

Additional smaller suppliers were also contacted, however their input didn't result in any changes to the intervention area. Their services were, however, considered eligible for the infill in sub 2Mbps areas.

The final State Aid maps for NGA Broadband and Basic Broadband reflecting the above changes are shown below and are available on the project website at:
www.hampshiresuperfastbroadband.com

Following the closure of State Aid Public Consultation, Hampshire Superfast Broadband Programme will be issuing an Invitation to Tender (ITT) to Framework Suppliers to bid for the opportunity to fulfil a new contract to deliver the extended coverage.



2. Timeline

The following table summarises the timescales of the next stages conducted by Hampshire Superfast Broadband Programme:

Activity	Date
Consultation period for the State Aid Public Consultation (2)	9th May – 10th July 2014
Submit State Aid Notification (Part 1) to DCMS	9th July 2014
Submit State Aid Notification (Part 2) to DCMS	14th November 2014
Expected start of procurement	6th October 2014
Award Superfast Broadband Contract	21st November 2014

3. Mapping Methodology for Revised State Aid Maps

The following methodology has been followed to develop Hampshire's State Aid Mapping for the intervention area in relation to the County Councils Phase 2 Superfast Broadband Project:

For Basic Broadband, each postcode (or partial postcode) is turned **Grey** if:

- BT has upgraded the network infrastructure serving the area AND premises within the post code (or partial post code) have an estimated (VDSL for FTTC) Access Line Speed of >2Mbps AND it is not an 'exchange only' (EO) line OR the premises current ADSL speed is estimated at >2Mbps;
- OR if it is in a Virgin Media area;
- OR it is an area served by an alternative fixed infrastructure provider with Access Line Speeds of >2Mbps;
- OR if a wireless service or other qualifying technology is available at >2Mbps to premises in the postcode (or partial postcode), and each postcode (or partial postcode) is turned Black if it satisfies two of these conditions. All other postcodes (or partial postcodes) remain White.

For NGA, each postcode (or partial postcode) is turned **Grey** if:

- BT has upgraded the network infrastructure serving the area AND premises within the postcode (or partial postcode) have an estimated (VDSL for FTTC) Access Line Speed of >15Mbps AND it is not an 'exchange only' (EO) line OR the premises current ADSL speed is estimated at >15Mbps;
- OR if it is in a Virgin Media area;
- OR if it is an area served by an alternative fibre-based infrastructure provider with Access Line Speed of >15Mbps;
- OR if it is in an area that is served by wireless or other qualifying technology that meets the requirements of the BDUK NGA Technology Guidelines¹;

Each postcode (or partial postcode) is turned **Black** if it satisfies two of these conditions.

All other postcodes (or partial postcodes) remain **White**.

A GIS tool was used to provide updated maps showing the basic and NGA coverage.

Additional Assumptions:

- If an operator has provided a dataset, which is unsuitable for inclusion in the Mapping Methodology then the Local body will revert back to the operator asking them for a suitable format.
- Where there is more than one operator providing partial coverage, it is assumed there will be complete overlap of coverage.
- The proposed NGA Intervention Area includes a number of other NGA 'At Risk' White areas, which are presently included in the planned commercial coverage. These areas are subject to further verification and if they fail to be included in the commercial rollout, they might be considered for future public sector funding.

The table below summarises the outcome of the Open Market Review in terms of White, At Risk, Grey and Black postcodes and premises for Superfast Broadband. It also accounts for premises in both the RCBF Rural Broadband Fund and the DCMS Innovation Fund Pilot.

Row Labels	Count of Postcodes	Sum of BDUK2 White Premises	Sum of BDUK2 Grey Premises	Sum of BDUK2 Black Premises	Sum of RCBF White Premises	Sum of BDUK2 DCMS Pilot Premises
Unassigned	58	0	0	0	0	0
At Risk	389	928	4602	1953	0	0
Black	13,714	0	22,889	256,991	0	0
DCMS Pilot	148	1,648	50	0	0	1,648
Grey	13,368	0	205,298	0	0	0
RCBF	491	5,700	890	166	5,700	0
White	7,818	57,321	29,092	6,515	0	0
Grand Total	35,986	65,597	262,821	265,625	5,700	1,648

The Intervention area for Hampshire Superfast Broadband Programme includes 57,321 NGA White premises spread over 7,818 NGA White postcodes with a potential of an additional 928 White premises, which are currently at risk.

The following table summarises the outcome of the Open Market Review in terms of White, Grey and Black postcodes and premises for Basic Broadband:

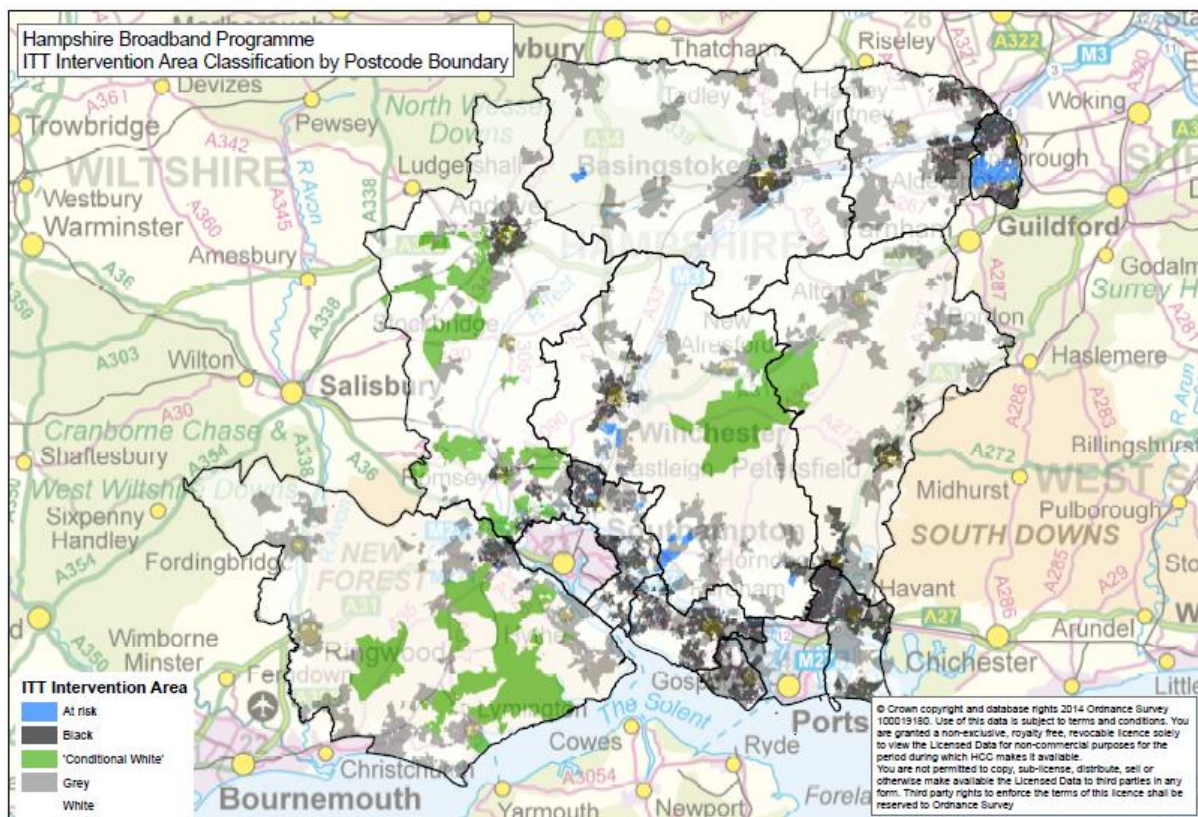


Row Labels	Count of Postcodes	Basic White Premises	Basic Grey Premises	Basic Black Premises
Black	25,575	-	-	456,002
Grey	583		98,937	-
Due to be NGA enabled	8,046	193	9,568	-
White	1,733	6,927	-	-
Grand Total	35,937	7,120	108,505	456,002

4. Updated State Aid Maps

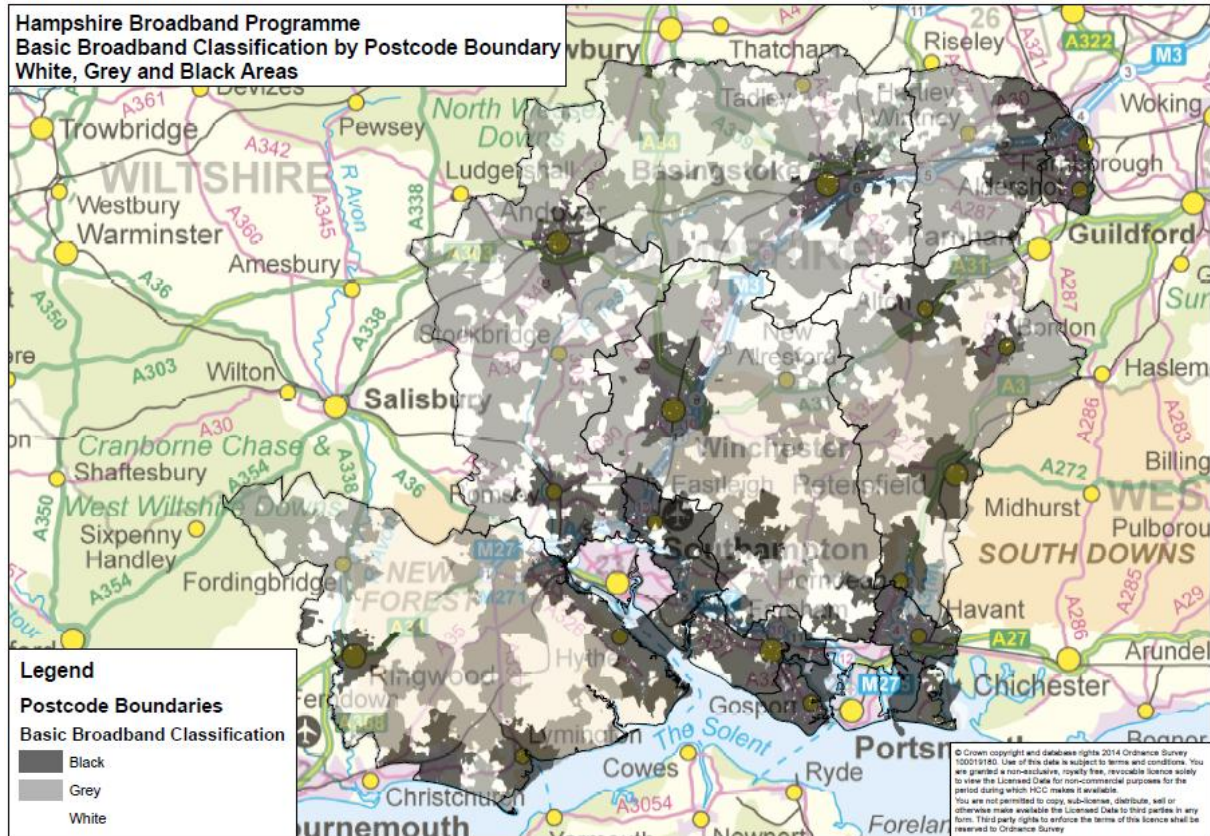
The updated State Aid maps for the Intervention Area are available as separate PDF files on the website, and smaller versions are shown below for illustrative purposes.

NGA Broadband map:





Basic Broadband coverage map:



5. Status of Intervention Area

The State Aid Public Consultation is now closed. The County Council has submitted its State aid (Part 1) notification to the National Competence Centre (NCC), which oversees the UK National Broadband Scheme. The NCC approved the Intervention Area on 21st November 2014. If clearance is granted, the Intervention Areas mapped above will be confirmed as eligible for public sector intervention for the next stage of Hampshire Superfast Broadband Programme. More information and final maps will then be published at: www.hampshiresuperfastbroadband.com

6. Additional Information

More information about areas covered by Hampshire Superfast Broadband Programme and any current and future plans for the extension of Superfast Broadband is available and regularly updated at: www.hampshiresuperfastbroadband.com

If any additional information regarding the State Aid Public Consultation or Hampshire Superfast Broadband Programme is required, please don't hesitate to contact the team by email at: broadband@hants.gov.uk.